

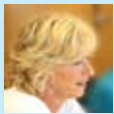
# Train the Take Part Trainers Project

Project Update January 2010

take part

**A national project which aims to build active citizenship skills and knowledge alongside the development of flexible teaching and learning methods and approaches**

## Project organisers have been appointed to the project:



### Joy Nancarrow

Areas covered: North East & North West regions

Tel: 0191 212 6100 Email: jnancarrow@wea.org.uk



### Paul Allender

Areas covered: Yorkshire and Humber, and East & West Midlands regions

Tel: 0771 748 0011 Email: pallender@wea.org.uk



### Chris Sanders

Areas covered: Eastern, London & South West regions

Tel: 07984 659121 Email: csanders@wea.org.uk

**Trish Land** - Project Manager and

**Gill Dean** - Project Officer

**Research work** was carried out on existing 'Training of Trainers' programmes and practice within Take Part Pathfinders and a report produced - A short report on 'work in progress' into Training of Trainers activity.

(for a copy of the report please contact Gill Dean on 0114 261 5423 or Email: gdean@wea.org.uk)

**The programme** has been planned to include: Introduction to Active Citizenship, Introduction to Becoming a Take Part Trainer, City & Guilds 7303 in Active Citizenship teaching and learning, and Day Conferences on Strengthening Democracy.

**The project** is being delivered in partnership with the National Association for Voluntary and Community Action (NAVCA). They will contribute to the delivery of the 'Strengthening Democracy' – Day Conferences and aim to:

- Provide an understanding of how local public decision making structures work and how community members can be involved and influence change
- Develop an understanding of the voluntary and community sector and its role in supporting community engagement and participation
- Provide an overview of how local people and organisations can influence national policy making

**Curriculum Development** of the programmes is going well and tutor resource packs will be available end of March / beginning of April.

## Curriculum Conference

**A Curriculum Conference** was held in September and 27 participants attended the day from across the regions. Partners who attended included: CDF, Take Part Network, Praxis, NAVCA, Church Action on Poverty, Working Lives Research Institute and the WEA.

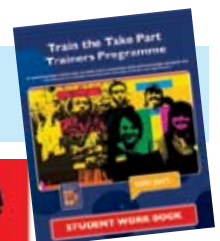


**20** participants completed the evaluation form. **10** participants suggested that *Personal Benefit* was excellent and **10** good.

**16** participants said that *Interaction* and *Participation* was excellent and **4** good.

All participants indicated that *training methods* used were either excellent or good with the exception of one who thought they were fair.

**An Evaluation Framework** has been developed and is being piloted during this phase of the project.



# 'Introduction to Active Citizenship'

Courses were offered last term in Sheffield and Mansfield. The courses were developed in partnership with the Take Part Pathfinders (Y&H and East Midlands); both courses recruited very well 14 + learners on each course. All the learners received an 'Attendance Certificate'.

The tutor on the Sheffield course commented, 'this was a very diverse group and all were thirsty for learning and to engage with discussion'. Some participants were very experienced and others came to the topic really quite raw'.

All recorded satisfaction with the course and a real sense of having learnt from one another.

One learner commented, 'It turned out that I had more ideas, opinions and understanding of the subject than I realized. It was having the time to debate with others that was invaluable'.

Another learner commented, 'Tutor was excellent: knowledgeable, encouraging, practical, and inclusive'.

Learners on the Mansfield course commented, 'I have more confidence and enthusiasm to be an active citizen and active citizenship tutor'.

'I now have a better understanding of being a global citizen as well'.

'Greater confidence to speak out regarding political issues'.



**Partnerships:** The programme is being developed with a variety of partners to include: Voluntary and Community Sector (CVS), Take Part Pathfinders, Local Authorities, Refugee Council Leeds & RETAS, Health Organizations - NHS Trust, BME Community Groups, Council Democracy Services, Sure Start, Unison, Citizens Advice Bureau, Women's Health Network, NAVCA and the WEA.

The project team has made contact with Government Office and National Empowerment Partnerships with the aim of identifying priority target areas, as well as potential opportunities for future collaboration with other 'empowerment initiatives'; new work is developing nicely as a result of these newly emerging partnerships.



## Website

The website has been developed - please visit [www.trainthetrainers.org.uk](http://www.trainthetrainers.org.uk)



For further information about the project and its activities, please contact Gill Dean at:  
WEA Sheffield Learning Centre, 3 Vicarage Road, Attercliffe, Sheffield S9 3RH

**Tel:** 0114 261 5423 **Email:** [info@trainthetrainers.org.uk](mailto:info@trainthetrainers.org.uk) **Website:** [www.trainthetrainers.org.uk](http://www.trainthetrainers.org.uk)

The Train the Take Part Trainers programme is managed by the Workers' Educational Association. It forms part of the Take the Take Part National Support Programme which is funded by the Department for Communities and Local Government and managed by the Community Development Foundation.

